



West Northamptonshire Council

G2S Section

11th August 2022



**G2S South and Central sections
Pre-app meeting with
West Northamptonshire Council**



Agenda

1. Greatworth “Tee” – construction
2. Helmdon Road, closure for topographical survey
3. B4525 Welsh Lane, trial holes and drainage survey and topographical survey
4. Sulgrave Road, closure for topographical survey
5. Banbury Road, closure for topographical survey
6. Banbury Road, closure for utilities diversions
7. Bridleways AG9 & AG10
8. Culworth Road, closure for topographical survey
9. A361 Bailey bridge installation
10. A361 Byfield Road, closure for topographical survey
11. Chipping Warden Tunnel Sections
12. Cedars Farm new access road
13. Cedars Farm plant crossing
14. Boddington Road temporary junction
15. Banbury, Warwick & Wormleighton Road closures for trial holes
16. Banbury Road, Boddington new bridge
17. A. O. B.

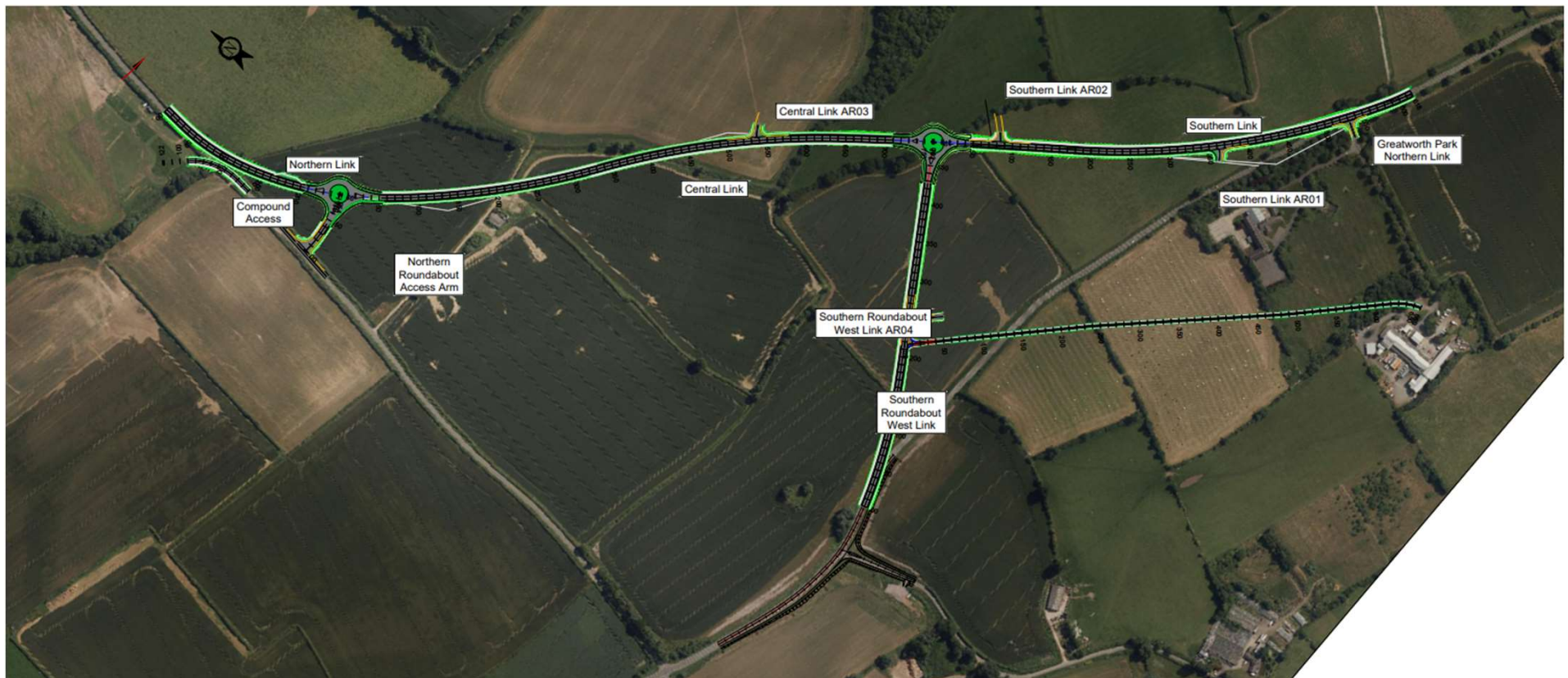


Greatworth Tee

EKFB received comments on our proposals on 5th April 2022, we responded to this on 14th June 2022.

We received a reply to our response on Monday 25th July which included additional information requests.

We are currently drafting a response to the latest request for additional information from the council



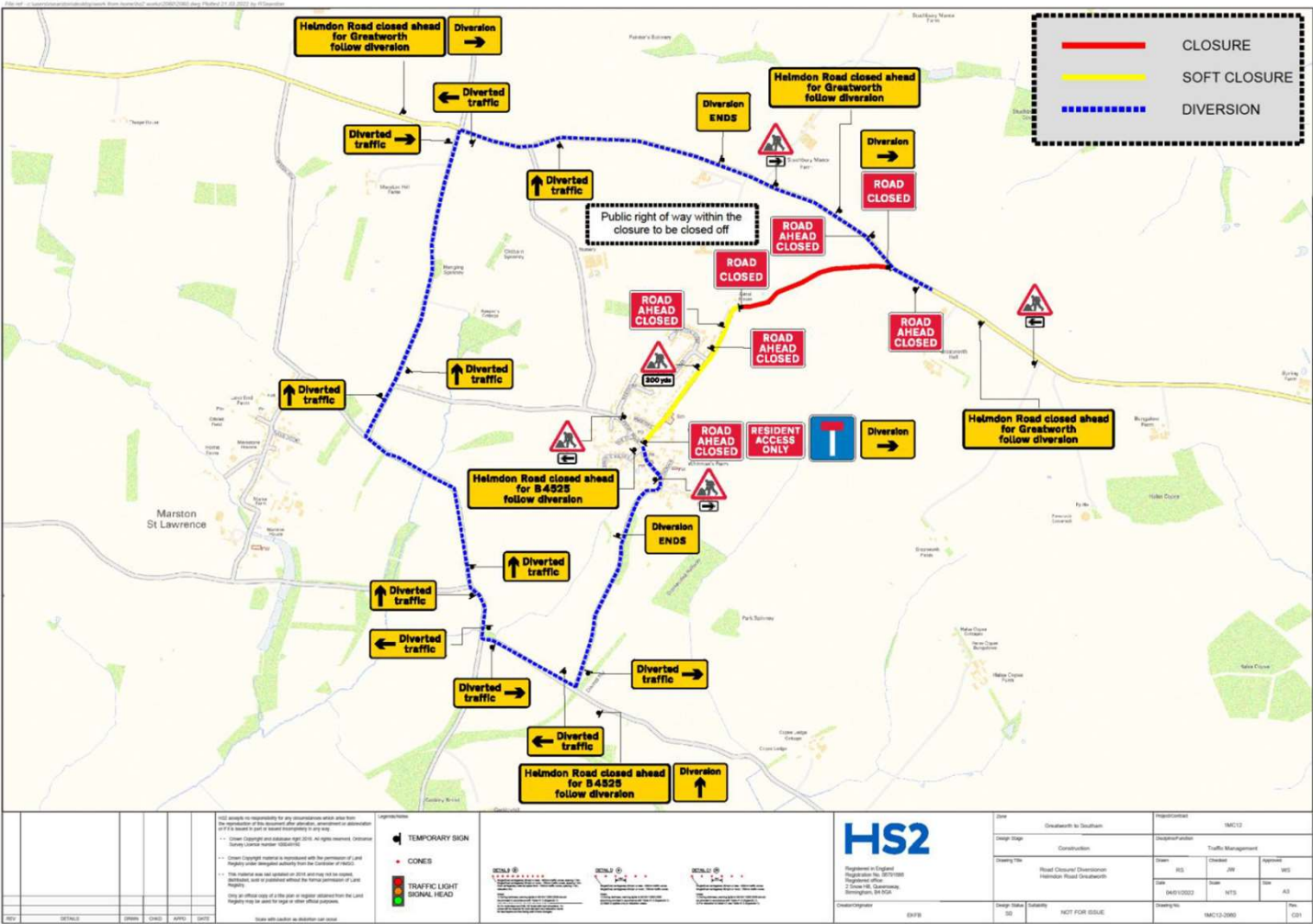
Helmdon Road road closure

EKFB propose to closed Helmdon Road between the 31st October to 4th November 2022.

Time of closure will be 08:00 – 18:00hrs or 20:00 – 06:00 hrs

Works to be carried out is a topographical survey of the existing road and drainage network

The last day/night of these works has a tie into the B4525



Line item 3028

B4525 Welsh Lane road closure

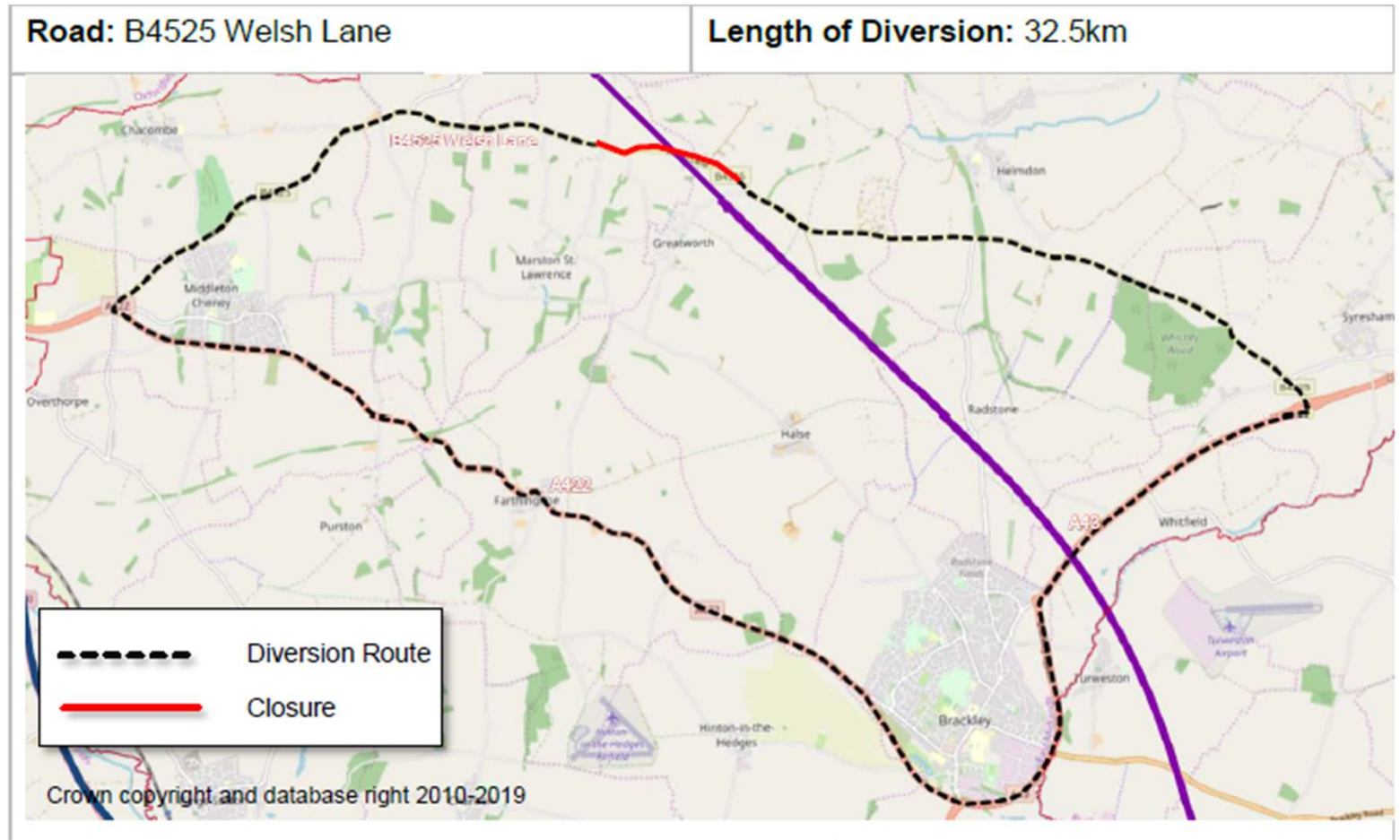
EKFB propose to closed the B4525 Welsh Lane twice in the coming months.

First dates are 21st & 22nd September for drainage inspections and trial holes. The road will be closed between 08:00 – 18:00 hrs. This work should only take 1 day with the 23rd September being a contingency date.

The second closure will be between the 7th – 11th November.

The closure times have yet to be confirmed but they will either be 08:00 – 18:00hrs or 20:00 – 06:00 hrs

Works to be carried out is a topographical survey of the existing road and drainage network



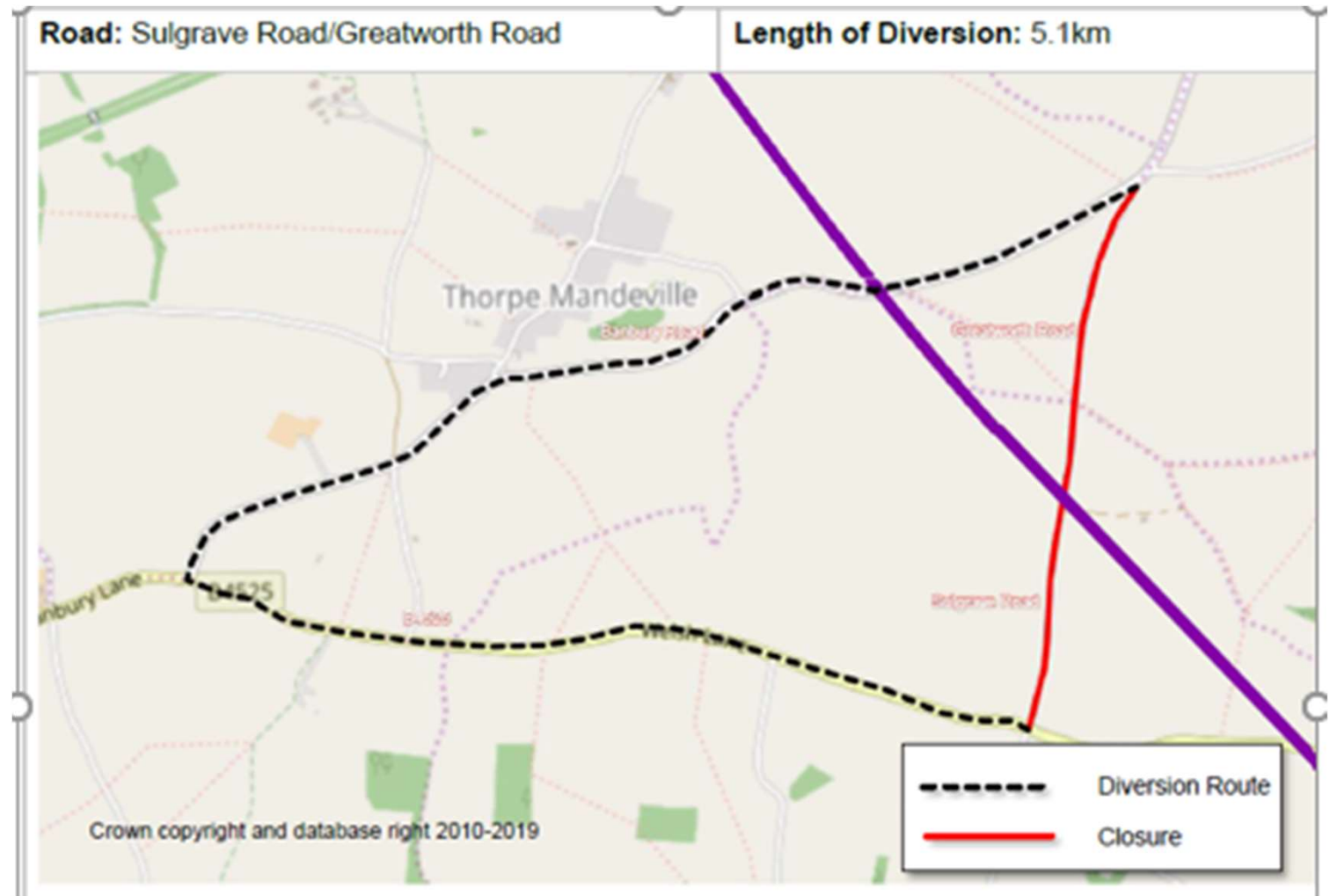
Line items 2972 & 3029

Sulgrave Road road closure

EKFB propose to closed Sulgrave Road between 12th & 15th September.

Due to Greatworth Green Tunnel compound being on Sulgrave Road and the nature of the works to be carried out, these road closures will be overnight closures, 20:00 – 06:00hrs.

Works to be carried out is a topographical survey of the existing road and drainage network.



Line item 3027

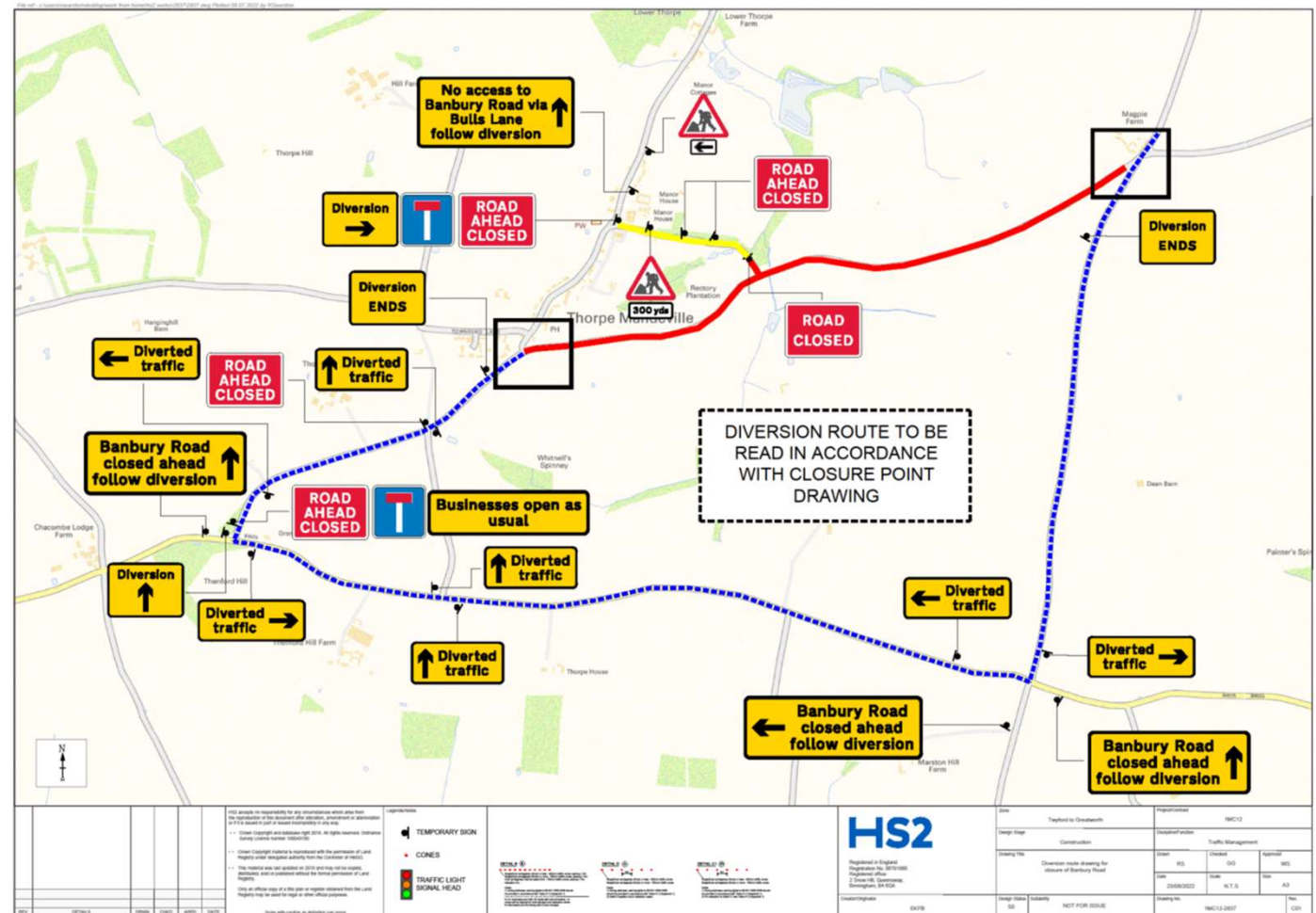
Banbury Road full road utilities diversions

EKFB have submitted two applications to close Banbury Road.

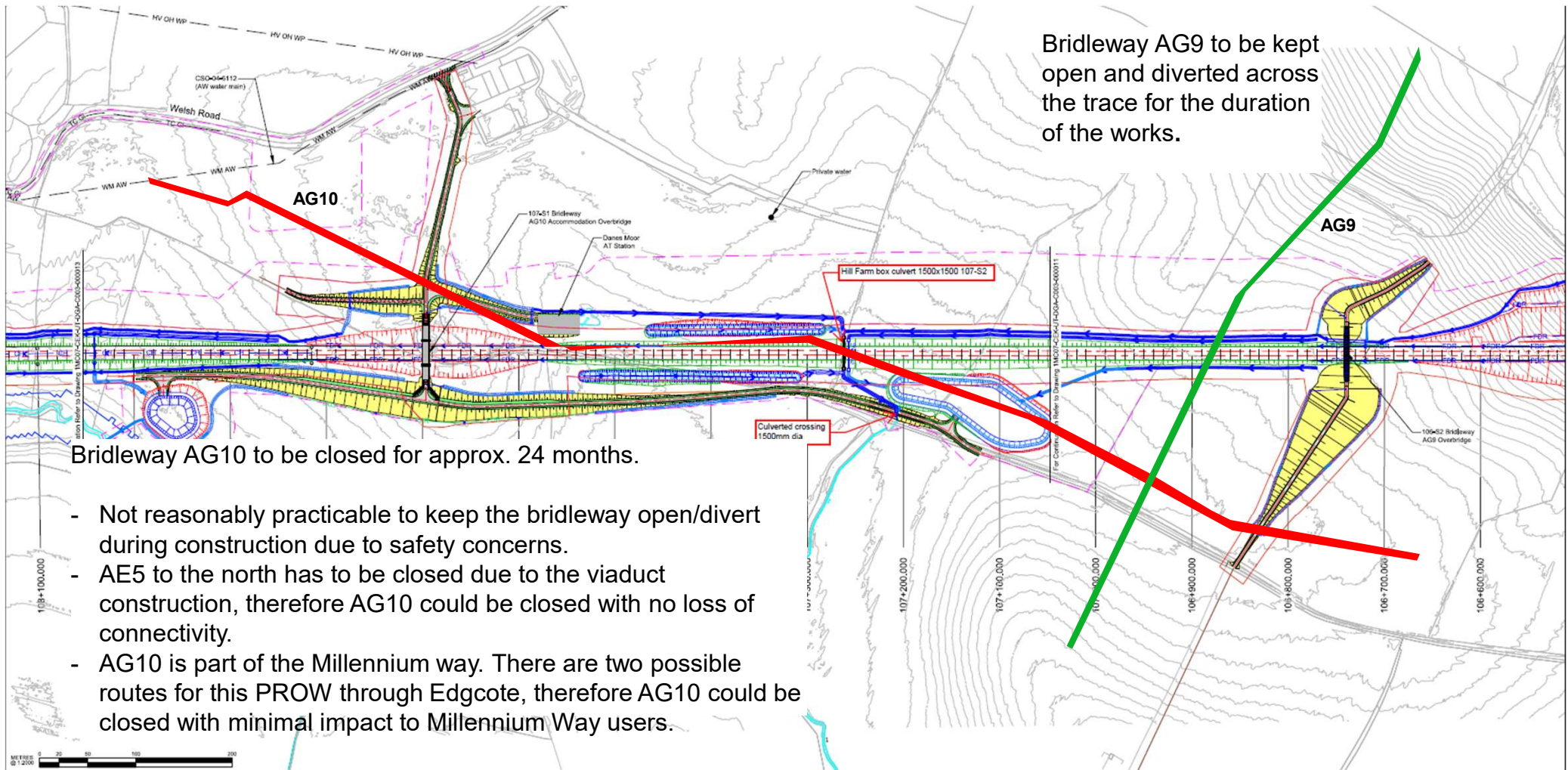
The first is from 26th September to 30th September. This closure is for topographical survey of the existing road and drainage network in this area.

The second is from Monday 3rd October to Sunday 30th October inclusive to carry out the utilities diversions in this area. The closure will be 24/7 as it involves several road crossings.

Line item 2870 and 2907 respectively

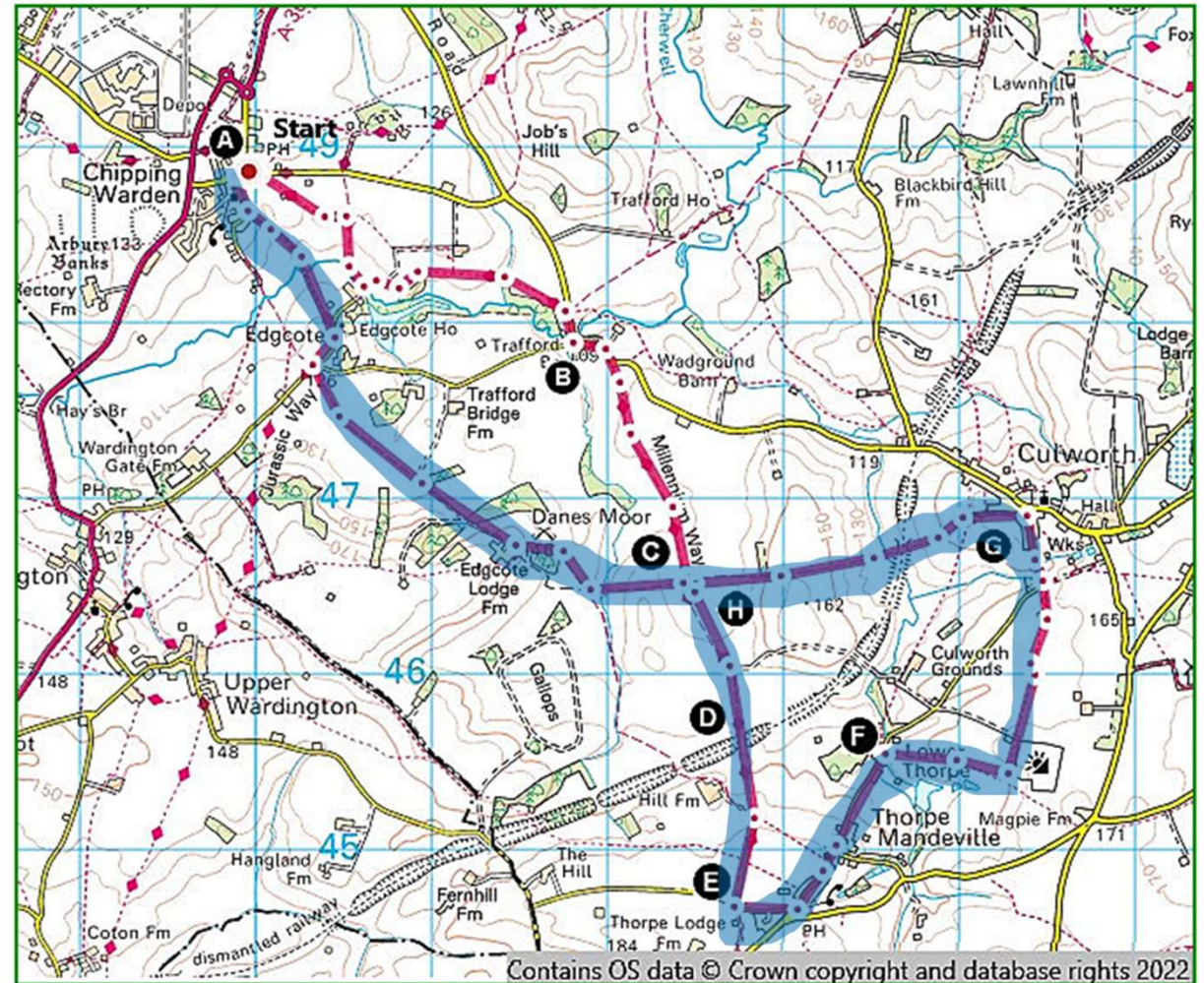


Bridleway AG9/AG10 Diversion



Bridleway AG9/AG10 Diversion

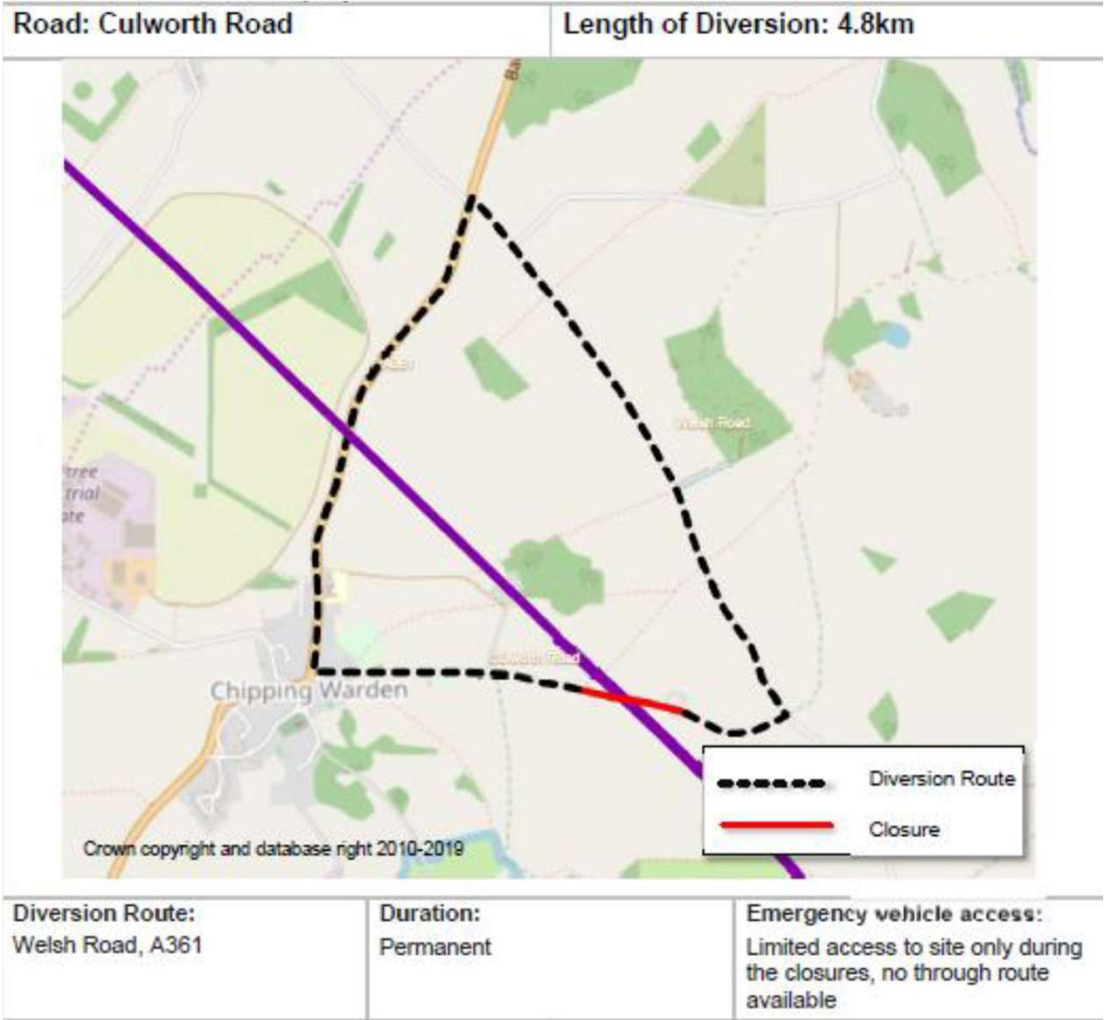
This route uses both AG9 and AG10, however looking at the map, I believe we could look to work with WNC on providing a diversion meaning it is only walk A>B>C cannot be done, and the other "loop" (D, E, F, G, H) can still be used, and link A>C can be managed using AE24 (through Edgcote). I've highlighted that loop on the map.



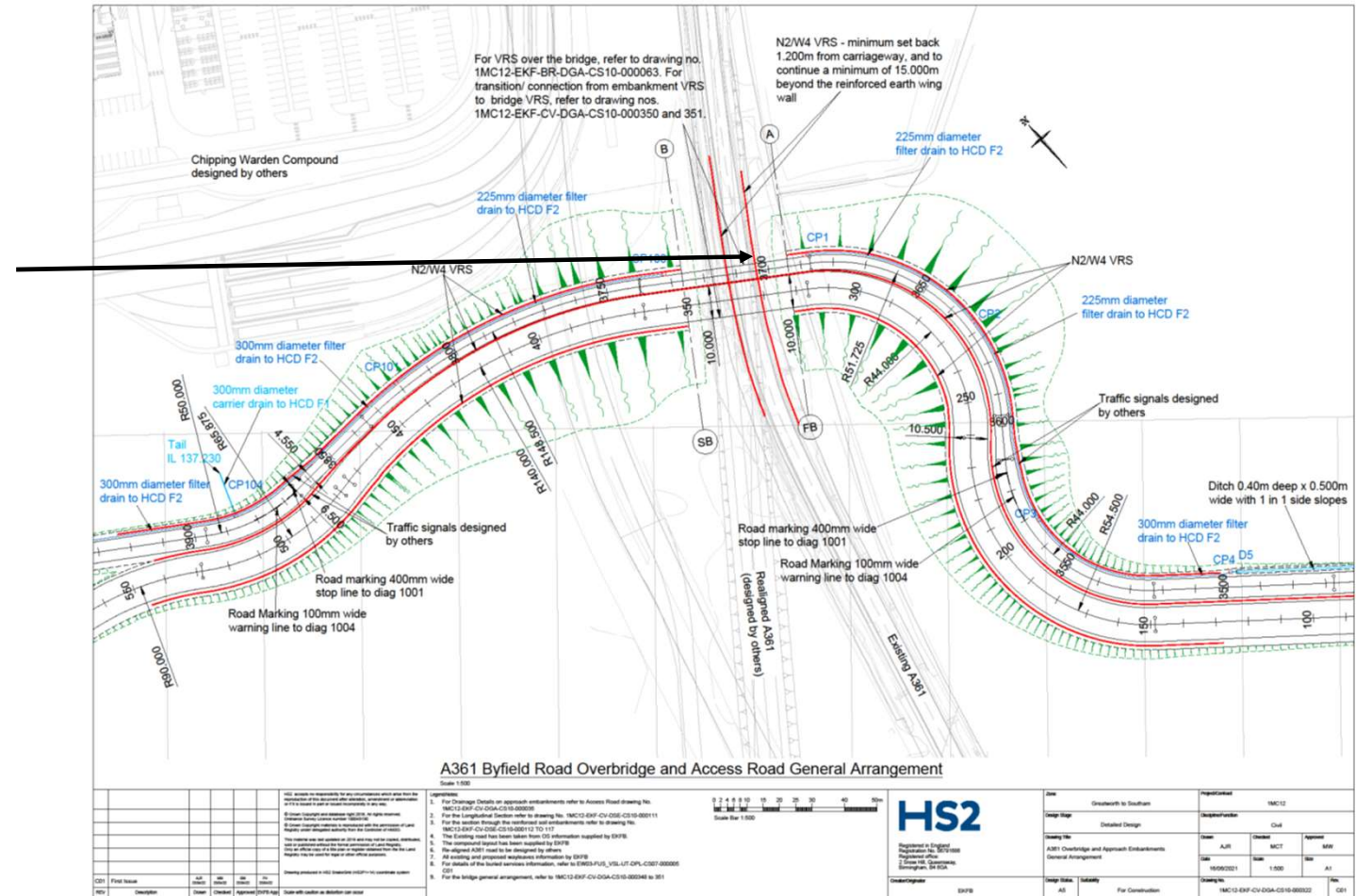
Culworth Road road closure

EKFB propose to closed Culworth Road between the 19th September and 21st September.
Time of closure will be 08:00 – 18:00hrs.
Works to be carried out is a topographical survey of the existing road and drainage network.

Line item 3030



EKFB closed the A361 on the night of Thursday 28th July to install the TVCBs for the south abutment construction works for the temporary bridge over the A361 along with other works in this area. These works were completed in one night. The second night was used to remove all the traffic management equipment.



Line item 2834

A361 Byfield Road temporary bridge install

EKFB have submitted the Schedule 33 part 1, AIP, Departure from Standard for the Vehicle Restraint System and the Impact Assessment form this month to WNC and WSP/Kier for comment.

We have received the Schedule 33 back but not received any feedback on the AIP, Departure from Standard for the Vehicle Restraint System and the Impact Assessment form Departure

Our proposed closure times are over a week-end starting on a Friday at 20:00hrs and ending on the Monday at 06:00hrs or earlier dependant of progress The first installation week-end will now be Friday 14th October, with the following 3 week0ends pencilled in, this includes a contingency week-end.

Line item 2434.



A361 Byfield Road Topographical survey

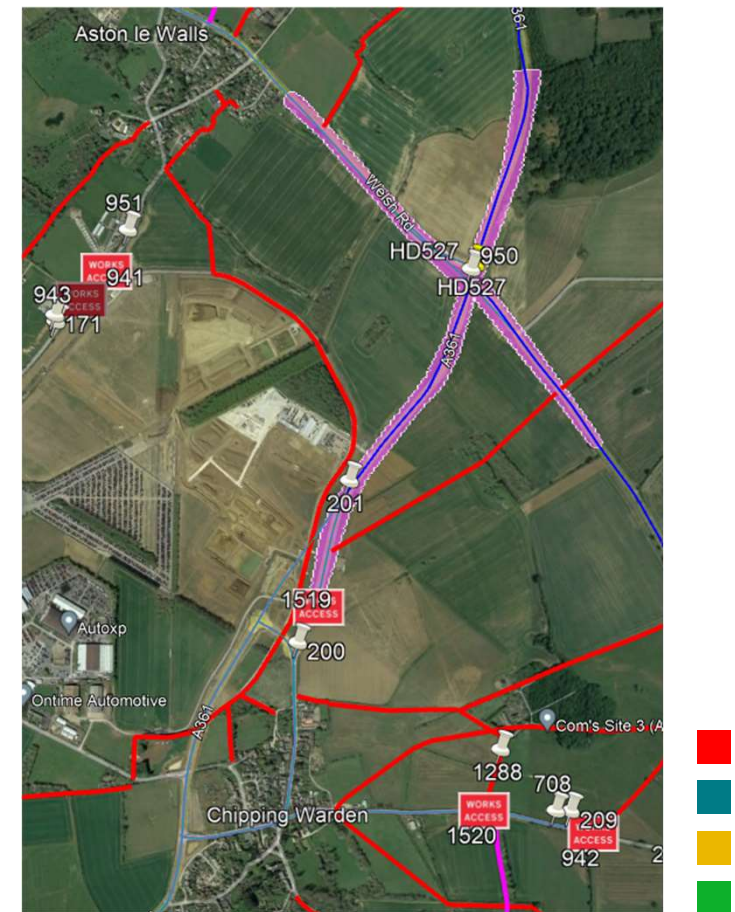
EKFB propose to closed the A361 Byfield Road overnight to carryout topographical surveys in the area shown adjacent.

Closure times will be 20:00 – 06:00hrs Monday to Thursday nights.

Closure dates are 17th October – 20th October and 24th October to 28th October.

We will also be utilising the week-end closures for the installation of the temporary bridge over the A361.

Line item2523



Chipping Warden Tunnel Sections Delivery

The method of how the tunnel sections are delivered has changed resulting in there will be only limited number of Sunday morning road closures between the M40 and Chipping Warden. The tunnel sections are now transported in a vertical section as opposed to horizontal as before. These closures will be notified individually with as much notice as possible given and with a contingency date for the following Sunday. These closures are for the tunnel sections which have the escape boxout within the section and can not be transported vertically. They are 4.2m wide.

Sunday 15 th May 2022	3 loads	
Sunday 22 nd May 2022	5 loads	
Sunday 29 th May 2022	5 loads	
Sunday 5 th June 2022	0 loads	Jubilee week-end
Sunday 12 th June 2022	5 loads	
Sunday 19 th June 2022	5 loads	
Sunday 26 th June 2022	5 loads	

Current delivery date Sunday 4th September 2022

Contingency date Sunday 11th September 2022

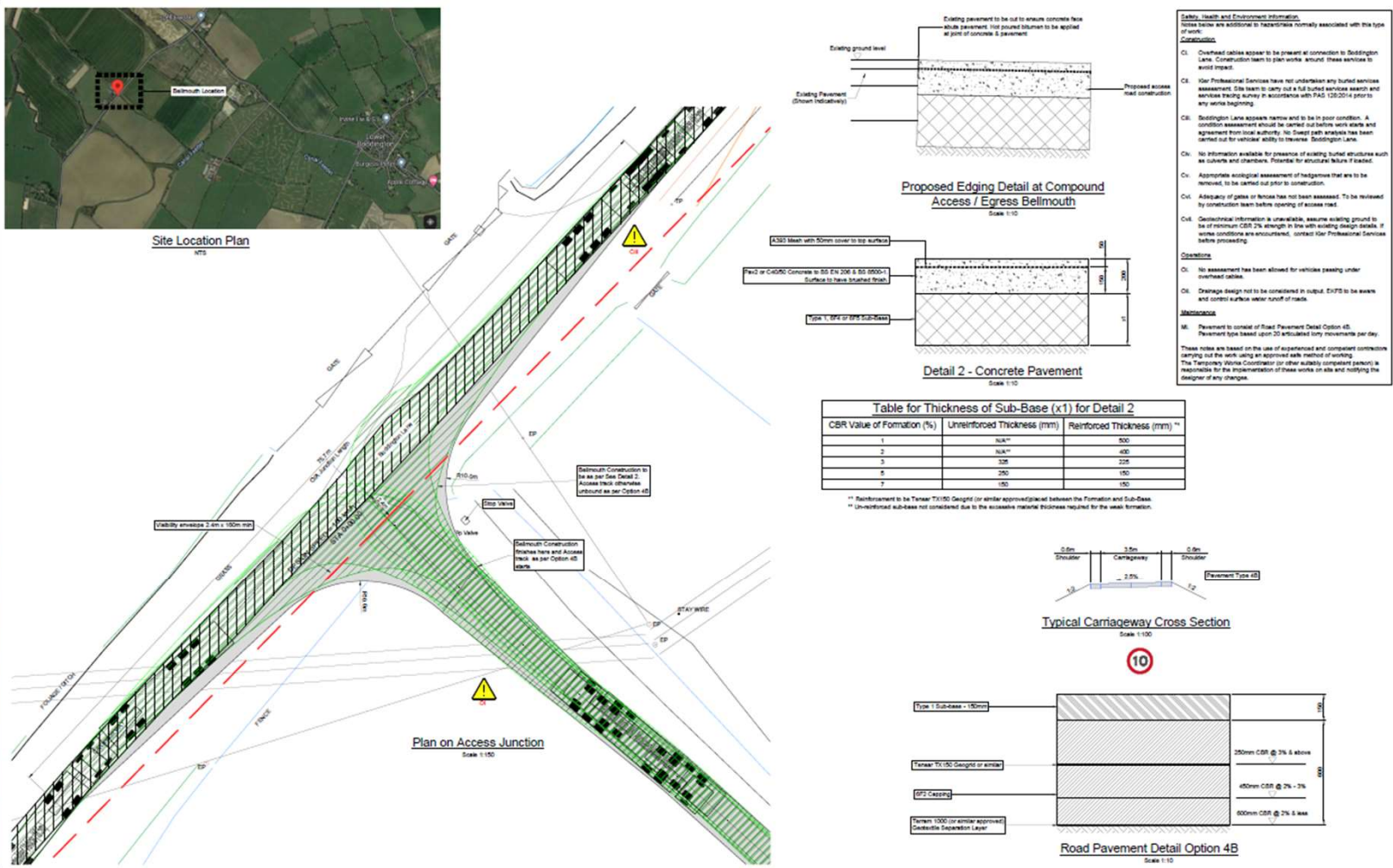
Line item 2945 & 2911



Cedars Farm new access road

We propose to construct a new access track between Cedars Farm and Boddington Road. This access track will run parallel to the trace and join Boddington Road. Works to this track is due to start 12th September and last 4 weeks.

Line item 2876



Cedars Farm plant crossing

We have installed a plant crossing on the existing Cedars Farm access track. As you can see the SAR / Cedars Farm track intersect very close to Banbury Road. We have installed a “Give Way” system so that there is limited interference with Banbury Road.



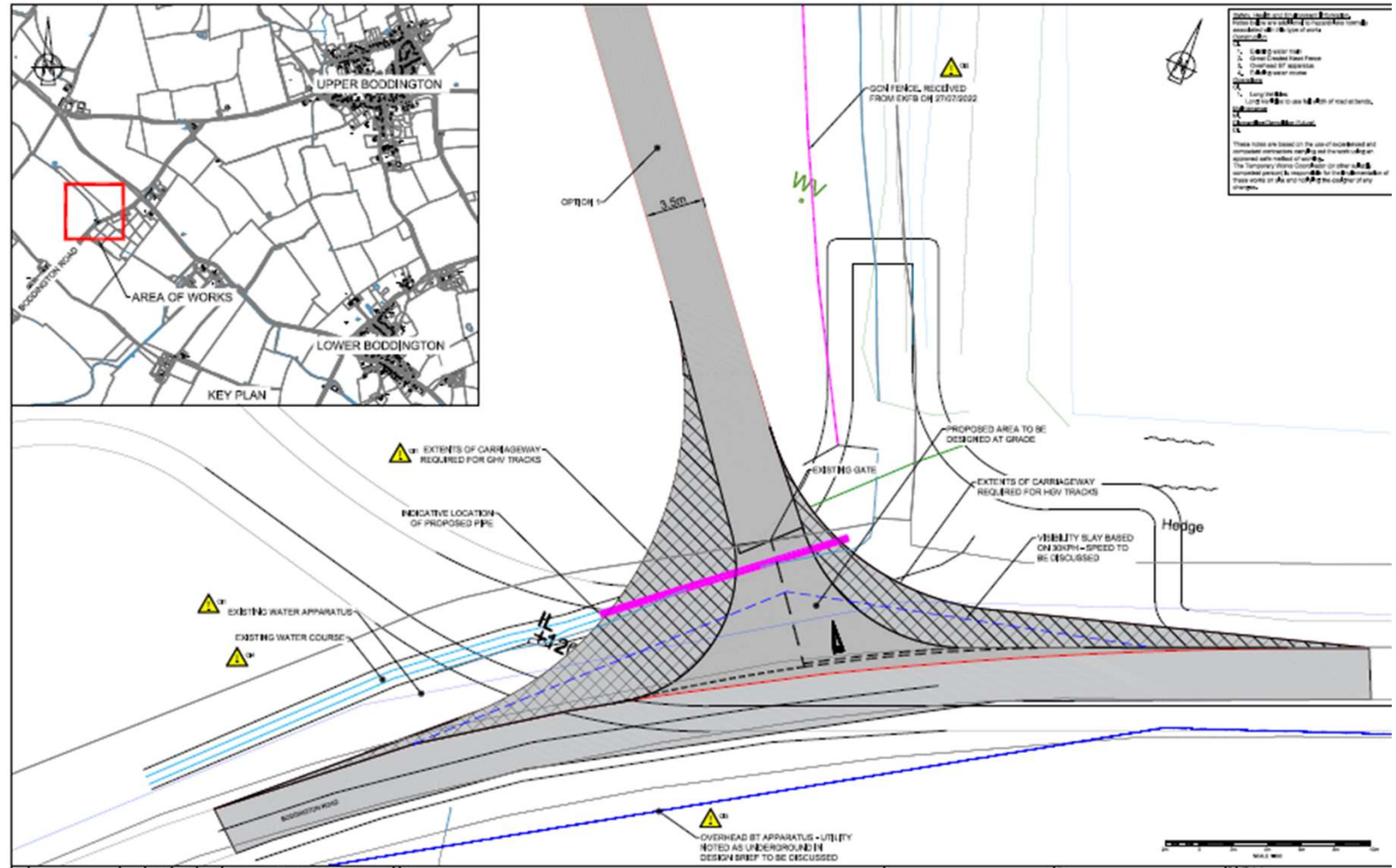
Line item 2948



Boddington Road temporary belmouth (Banbury Road bridge Ph 3)

As part of the new Banbury Road over bridge works we propose to install a temporary belmouth on to Boddington Road. This is the initial works relating to Phase 3 of our proposed sequence of works relating to the new over bridge. Works to this belmouth is due to start 12th September and last 4 weeks.

Line item 2965



Banbury, Warwick & Wormleighton Roads closure for trial holes

We are looking at closing the above roads to carry out the following works

- trial holes
- De-veg works
- Topographical surveys
- Setting out of main works.

The road closure times will be 08:00 – 18:00hrs, open overnight and at week-ends.

Closure dates are

Banbury Road 1st Aug – 5th Aug.'22

Works completed

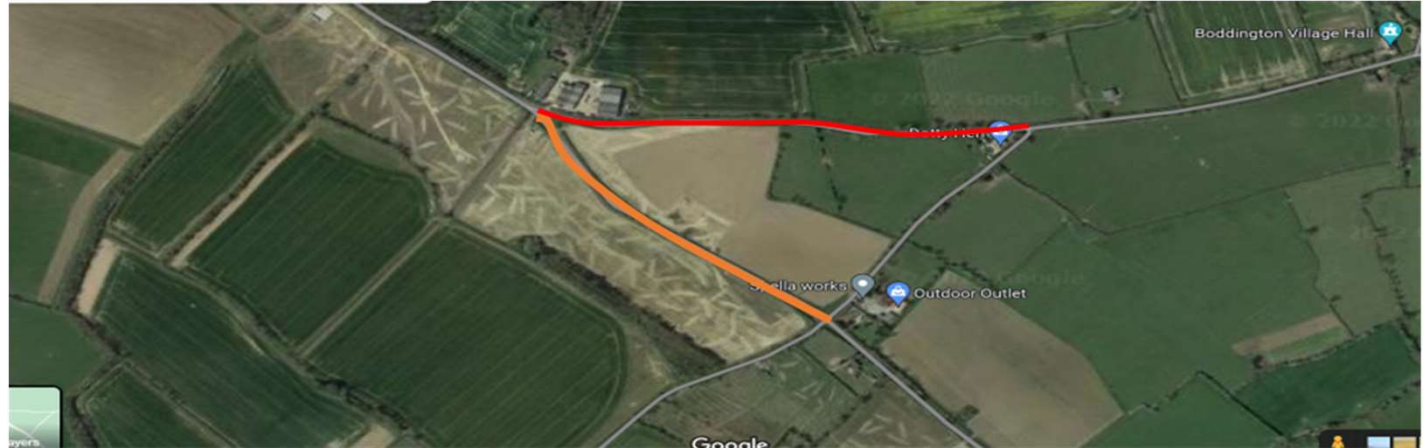
Warwick Road 8th Aug – 12th Aug.'22

Currently closed

Wormleighton Rd 15th Aug – 19th Aug.'22

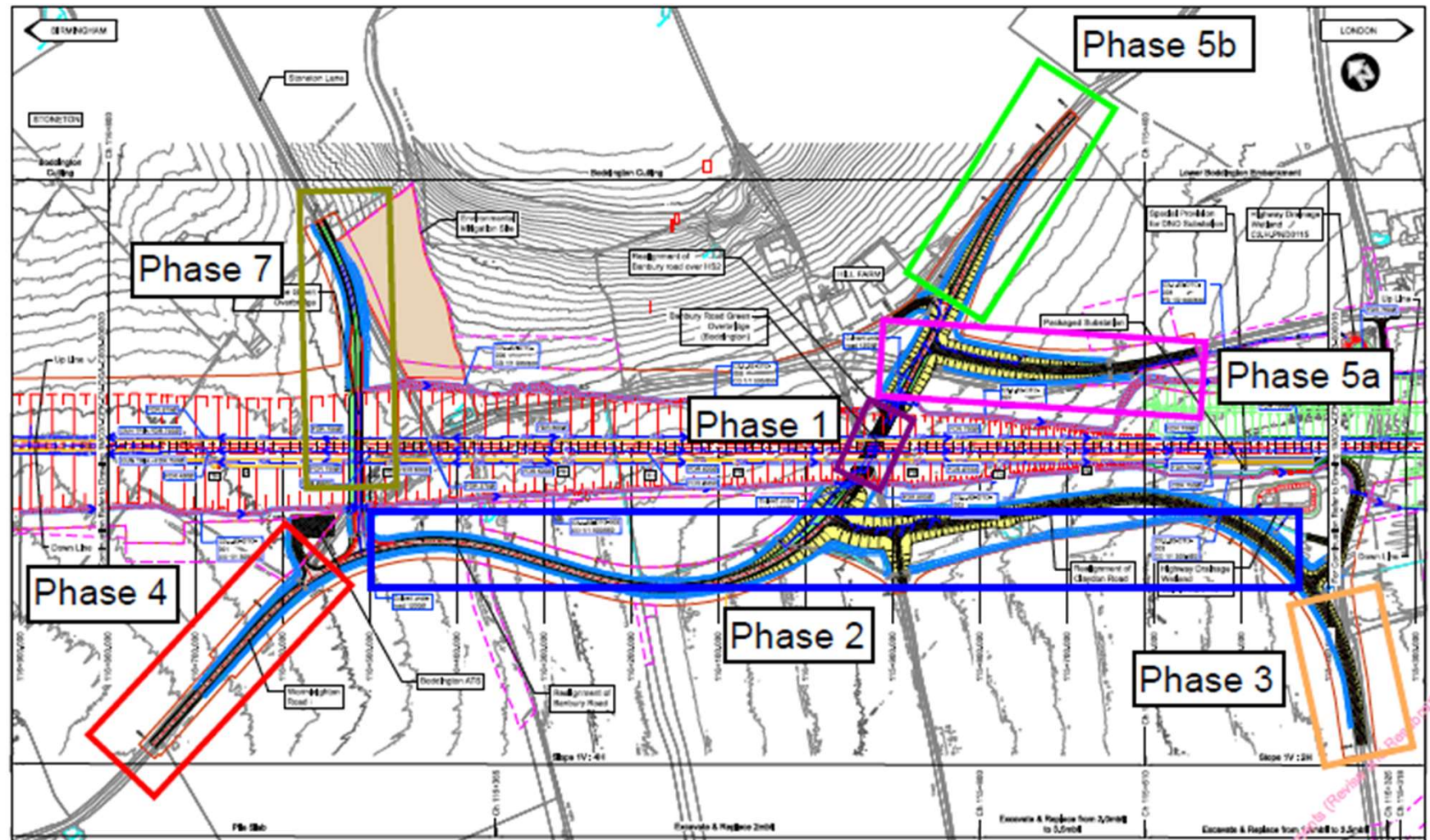
Works cancelled due to an Anglian Water emergency closure of Banbury Road near to Cedars Farm entrance

Line items 2822, 2825, & 2823



Banbury Road / Wormleighton Road new bridge overview

Phase 1 ~ start Spring 2022, build new bridge.
 Phase 2 ~ start Jun.'22 to Dec.'22, build road.
 Phase 3 ~ close Boddington Road, from Sept.'22 for 6 weeks.
 Claydon Road will be closed after phase 3 to construct the new bridge (Oct.'22 – Mar.'24).
 Phase 4 ~ close Wormleighton Road, Oct.22 for 6-8 weeks to build tie in, open before Christmas 2022
 Phase 5A ~ close Banbury Road from Mar.'23 for 8 weeks to build road,
 Phase 5B ~ close Warwick Road, May'23 for 3 months
 Phase 7 ~ close Leisure Drive Q4 of 2023 for 18 months



Future works

SAR and haul road crossings to

B4525 Welsh Lane T B C summer 2022

Footpath and bridleway closures or diversions

AG9 June/July 2022 local diversion

AG10 June/July 2022 close

Road Closure

Boddington Road to construct new tie-in – September 2022

Claydon Road new bridge construction – October 2022



Any Other Business

Next meetings are

Thursday 8th September 2022 @ 10:30hrs

Thursday 22nd September 2022 @ 10:30hrs

Thursday 6th October 2022 @ 10:30hrs

