



Contact our HS2 Helpdesk team on **08081 434 434**

HS2 Update

Greatworth to Thorpe Mandeville | May 2021

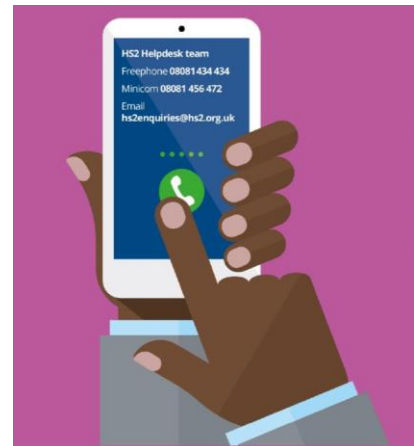
High Speed Two (HS2) is the new high speed railway for Britain. In response to COVID -19 we have worked hard to ensure that our working practices are fully aligned with the Site Operating Procedures produced by the Construction Leadership Council. These procedures have been endorsed by Public Health England. We will be keeping our local website www.hs2innorthants.co.uk up to date with information on our works in the local area.

Update on our main works

Our activity in the Greatworth to Thorpe Mandeville area is well underway with the main works compound known as the 'Greatworth Green Tunnel Compound' being set up and some early construction works starting.

Over the summer our activity will extend from the compound and you can expect to see the following works in the local area:

- Ground Investigations (GI);
- Utility works including trial holes;
- Land surveys to measure land levels;
- Completion of the 'Greatworth Green Tunnel' Compound;
- Installation of a concrete batching plant;
- Localised clearance of vegetation and fencing along the line of the route;
- Construction of access and haul roads to move people, material, and earthworks along the line of the new railway, rather than on local roads;
- Excavation, movement, and storage of earthworks; and
- Some short duration traffic management and temporary footpath diversions to carry out some of the above activities.



Join us online...

We regularly hold **Virtual Surgery events** – contact the HS2 helpdesk to register your interest.

The virtual surgery will give you the opportunity to ask your questions to our engagement team about the HS2 works in your area.

Simply book your slot by contacting the HS2 helpdesk or email engagement@ekfb.com.



Upcoming works



Working in
partnership with

HS2

Greatworth Green Tunnel Compound

We have been building the compound over the past few months and it will be fully operational by June. The works compound will accommodate a workforce of around 400 people as well as office accommodation for 120. The facilities include offices, welfare facilities, materials laboratories, first aid facilities, car parking and a concrete batching plant. When the compound is no longer required for our construction activities, it will be removed and the land returned to agricultural use.

Concrete batching plant

In May 2021 we will start to construct the concrete batching plant. A concrete batching plant is used to create, store and distribute concrete locally to the project, which will help to take additional HGVs off the road. All batching plant activity is very well controlled and monitored. The modern systems that we use operate a 'sealed system' which means that cement is pumped into silos and the mixing process does not allow dust to escape into the atmosphere.

Site clearance and fencing

Fencing and site clearance works are substantially completed, though in some areas we expect to continue these activities over the summer.

Road construction and earthworks

Temporary roads will be constructed to provide access for people and materials along the line of the new railway, helping to keep construction vehicles off the local roads. We will also be constructing a new section of road to divert the B4525 while we build the green tunnel.

We will start earthworks activities in July and this will involve excavations to build the tunnel and move earthworks to stockpiles. Associated works will involve drainage and forming settlement ponds.



Roads and Public Rights of Way closures and diversions

We are working hard to minimise the impact of our works on the road and public rights of way network during our construction works. However, we will need to carry out some short-term road closures as well as closing or diverting some of the public rights of way that are in the vicinity of the new HS2 line during our works. Please allow further time for your journeys.

Sulgrave Road/Greatworth Road will be closed for around three weeks in the summer to allow power installation to our Greatworth compound.

A section of footpath AN39 will be closed in July and other footpaths such as AN40, AN42, AN6 and AY12 will have local diversions. A map identifying footpaths can be found at: <http://maps.northamptonshire.gov.uk/>

Remember to sign up to our Commonplace website to read the online traffic guide or request a copy from the HS2 Helpdesk.

Keeping you informed

We are committed to keeping you informed about work on HS2. This includes ensuring you know what to expect and when to expect it, as well as how we can help.

Residents' Charter and Commissioner

The Residents' Charter is our promise to communicate as clearly as we possibly can with people who live along or near the HS2 route.
www.gov.uk/government/publications/hs2-residents-charter
We also have an independent Residents' Commissioner whose job is to make sure we keep to the promises we make in the Charter and to keep it under constant review. Find reports at:
www.gov.uk/government/collections/hs2-ltd-residents-commissioner
You can contact the Commissioner at: residentscommissioner@hs2.org.uk

Construction Commissioner

The Construction Commissioner's role is to mediate and monitor the way in which HS2 Ltd manages and responds to construction complaints. You can contact the Construction Commissioner by emailing: complaints@hs2-cc.org.uk

Property and compensation

You can find out all about HS2 and properties along the line of route by visiting:
www.gov.uk/government/collections/hs2-property
Find out if you're eligible for compensation at:
www.gov.uk/claim-compensation-if-affected-by-hs2

Holding us to account

If you are unhappy for any reason you can make a complaint by contacting our HS2 Helpdesk team. For more details on our complaints process, please visit our website:
www.hs2.org.uk/how-to-complain

Contact Us

Contact our HS2 Helpdesk team all day, every day of the year on:

- ☎ Freephone **08081 434 434**
- ☎ Minicom **08081 456 472**
- ✉ Email hs2enquiries@hs2.org.uk

Write to:
FREEPOST
HS2 Community Engagement

Website www.hs2.org.uk

To keep up to date with what is happening in your local area, visit: www.HS2inyourarea.co.uk

Please contact us if you'd like a free copy of this document in large print, Braille, audio or easy read. You can also contact us for help and information in a different language.


HS2 Ltd is committed to protecting personal information. If you wish to know more about how we use your personal information please see our Privacy Notice <https://www.gov.uk/government/publications/high-speed-two-ltd-privacy-notice>

EKFB Working in partnership with HS2

Traffic Information Guide

Greatworth to Southam | Winter 2020

High Speed Two (HS2) is the new high-speed railway for Britain. We have committed to create a low carbon railway that is designed, built and operated to the highest health, safety and security standards.



HS2's Site Working Hours

Normal working hours:
Monday to Friday
8.00am - 6.00pm
Saturdays
8.00am - 1.00pm
Contractors may be on site for one hour's start-up and shutdown either side of these times and construction traffic might also be present during these times.

In some cases, work outside normal hours may take place, and we will inform communities when this occurs.

Construction traffic and worker cars may arrive earlier and depart after the working hours.

About this guide


This traffic guide will give you details of how construction traffic is going to be managed in your area. Take a look at the routes that we plan to use between Greatworth and Southam, along with our forecasted peak delivery numbers. You can gain an overview of the control measures that are in place across the whole HS2 route, as well as specific local actions, such as junction improvements and crossings.

About EKFB

EKFB is the main works contractor carrying out the civil engineering works for the new HS2 line in this area. EKFB will undertake all earthworks and landscaping as well as create new structures including bridges, viaducts and green tunnels. The construction works are being planned in a way that will minimise disturbance on local roads and access between villages. You can find details in this guide.

HS2 and the role of the Highways Authority in highway matters

The HS2 Act of Parliament provides HS2 Ltd and their contractors with the powers to work in the highway to construct the new railway. The responsibilities that councils have for HS2 works differ slightly from other highways work. In all cases, the local Highway Authority is consulted and in certain cases, the consent of the highway authority is required. HS2 Ltd and their contractors produce Local Traffic Management Plans and work very closely with the councils and their highways teams to ensure that traffic is well managed. HS2 Ltd is only required to seek consent on traffic routes for vehicles over 7.5 tonnes. Further information can be found in the HS2 Act or see details for the HS2 Helpdesk on the back of this Guide.



Reference Number: 1MC12-EKF-IN-NTE-CS10-000001

High Speed Two (HS2) Limited, registered in England and Wales.
Registered office: Two Snowhill, Snow Hill Queensway, Birmingham B4 6GA.
Company registration number: 06791686. VAT registration number: 181 4312 3

Above is the example layout of the traffic guide. We recommend printing in A3 for best quality.

If you have a questions about HS2 or our works, please contact our HS2 Helpdesk team on 08081 434 434 or email hs2enquiries@hs2.org.uk

Keep up to date with our works

Commonplace website

Our Commonplace website provides the most up to date information about our works in this area.

We would recommend subscribing to our news updates in the Northamptonshire area. You can do this in three easy steps:

1. Visit our Commonplace website – www.hs2innorthants.co.uk
2. Under 'Subscribe to news updates', enter your email address and click 'Get Project News'
3. Now you will get up to date information sent to your email address

On Commonplace you can also view more information on our proposed designs, community engagement documents as well as information on upcoming events in your area.

Welcome to HS2 in Northamptonshire

High Speed Two (HS2) is the new high speed railway for Britain.

This website has information about what we are doing in Northamptonshire, including notifications of our upcoming works, how it's being constructed and what we're doing to make it less disruptive.

[Contact us](#) [More about HS2](#)

Subscribe to news updates for HS2 in Northants

Your email

[Get project news](#)



Works in your area
Find out about current and upcoming construction works in your area and related engagement events.
[View details](#)



Lower Thorpe & Edgote Viaducts
Find out about the proposed design for the viaducts and sign up for our engagement webinars.
[View details](#)



Community Funds
Find out about the funding programme and how you can access it.
[View details](#)



Onboard with local business
Find out if your business could benefit by providing our workers with a place to stay, eat or other key services and amenities.
[View details](#)



Career and training opportunities
Find out about jobs and training opportunities available in your area.
[View details](#)



Managing the impacts of construction
Find out about our traffic management measures, our aim to reduce disturbance to neighbours and manage our impact on the environment.
[View details](#)



Managing our impact on the environment
Find out about our environmental management plans and how we are working to reduce our impact on the environment.
[View details](#)



Property schemes
Find out about our property schemes and how we are working to improve the quality of our property.
[View details](#)



Key community engagement documents
Find out about our key community engagement documents and how we are working to improve our engagement.
[View details](#)

FAQ

Some of our most commonly asked questions in your area...

Q: How are you protecting birds during nesting season?

A: Before any work close to trees or vegetation is undertaken, an ecologist attends the site and carries out a detailed survey to ensure no bats, birds or nests are present. If any wildlife or nests are discovered, the tree is left alone until the bird leaves the nest, and a boundary is put in place to ensure they are not disturbed.

Q: Are you tracking your HGVs to ensure they follow approved routes?

A: We have a vehicle management system in place to ensure we can track all regular vehicles and hauliers delivering to our sites. We can monitor the routes taken, reroute vehicles where necessary, and reject any vehicles who do not comply with our strict criteria.

Q: How are you managing dust at your work sites?

A: We are using dust suppression systems at our sites. We spray down work areas, haul routes and plant using water bowsters to prevent dust from becoming airborne. We also use dust monitoring techniques to ensure we can monitor air quality levels close to our work sites.

Community Investment

We have been active in getting to know the local communities and have participated in local charity walks, Dementia Friends training, donated items for local foodbanks and even held a fundraising day to raise money for Berryfields Parish Council who needed to buy 120 children pyjamas last Christmas.

We have launched a volunteering Time Bank scheme where you can apply for the use of dedicated time from within their experienced team to provide practical support to communities. From litter picking and planting trees to help with social media or website support, there are many ways we can help!

We are keen to support with volunteering and fundraising work for local charities. If you would like to know more then please contact the HS2 Helpdesk.



HS2 funds for the community

There are two funds which are available to local communities to help with disruption that will be caused by the construction of Phase one of HS2 – **The Community and Environmental Fund (CEF)** and the **Business and Local Economy Fund (BLEF)**.

Community and business groups along the HS2 route have been awarded over £5million for projects since the funds began running in March 2017. So far in the area, HS2 has provided funding to Greatworth Community Transport Association to lease a 16-seater community minibus which will provide a service for the communities of Greatworth and the surrounding area for a period of three years during the main HS2 construction works.

For more information on the funds available visit www.hs2funds.org.uk





Keeping you informed

We are committed to keeping you informed about work on HS2. This includes ensuring you know what to expect and when to expect it, as well as how we can help.

Residents' Charter and Commissioner

The Residents' Charter is our promise to communicate as clearly as we possibly can with people who live along or near the HS2 route.

www.gov.uk/government/publications/hs2-residents-charter

We also have an independent Residents'

Commissioner whose job is to make sure we keep to the promises we make in the Charter and to keep it under constant review. Find reports at:

www.gov.uk/government/collections/hs2-ltd-residents-commissioner

You can contact the Commissioner at:

residentscommissioner@hs2.org.uk

Construction Commissioner

The Construction Commissioner's role is to mediate and monitor the way in which HS2 Ltd manages and responds to construction complaints. You can contact the Construction Commissioner by emailing:

complaints@hs2-cc.org.uk

Property and compensation

You can find out all about HS2 and properties along the line of route by visiting:

www.gov.uk/government/collections/hs2-property

Find out if you're eligible for compensation at:

www.gov.uk/claim-compensation-if-affected-by-hs2

Holding us to account

If you are unhappy for any reason you can make a complaint by contacting our HS2 Helpdesk team. For more details on our complaints process, please visit our website:

www.hs2.org.uk/how-to-complain

Contact Us

Contact our HS2 Helpdesk team all day, every day of the year on:



Freephone **08081 434 434**



Minicom **08081 456 472**



Email **HS2enquiries@hs2.org.uk**

Write to:

FREEPOST

HS2 Community Engagement

Website **www.hs2.org.uk**

To keep up to date with what is happening in your local area, visit:

www.hs2inbucksandoxfordshire.commonplace.is

Please contact us if you'd like a free copy of this document in large print, Braille, audio or easy read. You can also contact us for help and information in a different language.

HS2 Ltd is committed to protecting personal information. If you wish to know more about how we use your personal information please see our Privacy Notice

<https://www.gov.uk/government/publications/high-speed-two-ltd-privacy-notice>

Reference number: 1MC12-EKF-IN-NTE-CS10-000002

High Speed Two (HS2) Limited, registered in England and Wales.

Registered office: Two Snowhill, Snow Hill Queensway, Birmingham B4 6GA.

Company registration number: 06791686. VAT registration number: 888 8512 56